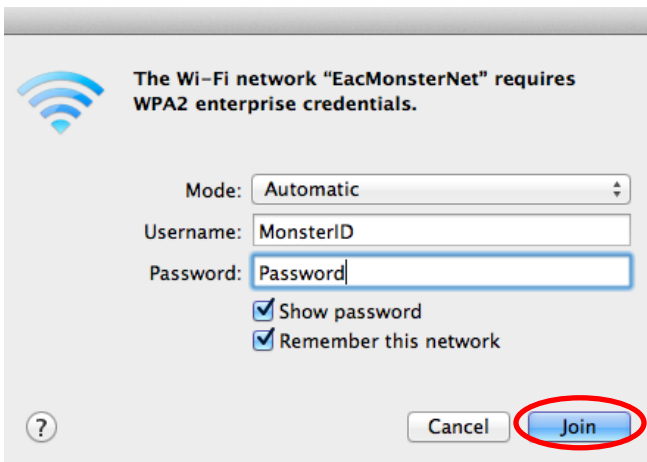
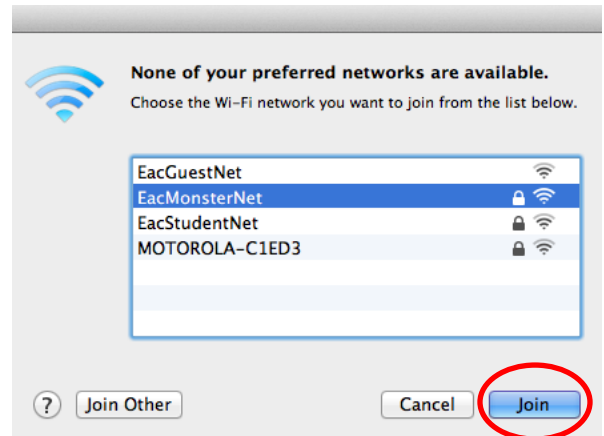


EacMonsterNet Wireless Setup MacIntosh Computers

These instructions will help you set up your on campus wireless connection to EacMonsterNet. Before beginning, you must be on campus, in the location of a hot spot.

If you are prompted to join a wireless network and EacMonsterNet is in the list of available networks start with step 1, otherwise go to step 3:

1. Your computer may prompt you to join a wireless network. Choose EacMonsterNet and select “Join.”

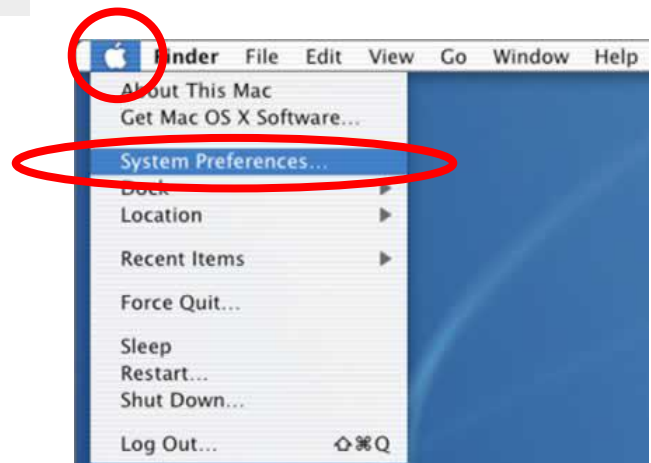


2. Leave the Mode as Automatic. Enter your Monster ID and Gila Hank password. For non EAC students enter your affiliated email address and password.

Then select Join.

After a moment, you should be connected to EacMonsterNet.

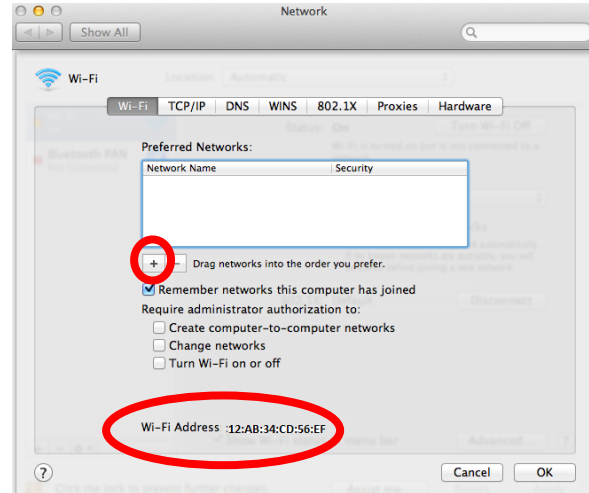
3. If don't receive the prompt above:
In the Apple menu, choose System Preferences.





4. Under “Internet and Wireless” select “Network.”

5. Select the Advanced button. Select the + button to add a wireless network.



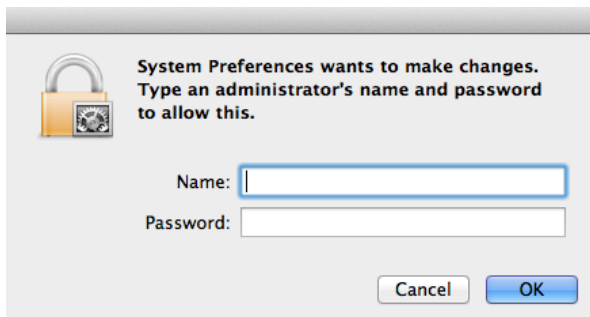
(EAC Students - Please note this is the Wi-Fi Address that needs to be entered into Gila Hank as the MAC address.)

6. Enter the network profile as follows. The network name is case-sensitive:

Network Name: EacMonsterNet
Security: WPA2 Enterprise
Mode: Automatic
Username: Type your MonsterID
Password: Enter your Gila Hank.
For non EAC students enter your affiliated email address and password.



At this point, you may be prompted to enter an Administrator username and password for your computer. This is referring to a username and password that you created, NOT one from Eastern Arizona College.



13. Select “OK” or “Apply” and close all of the open windows. After a moment, you should be connected to EacMonsterNet.