

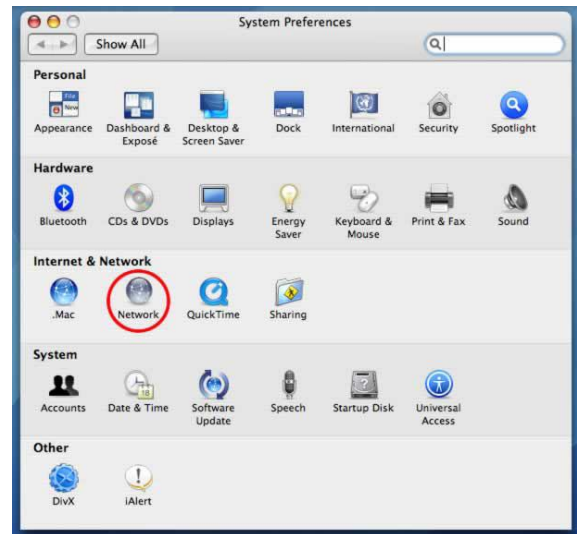
Residence Towers Network Access for Macintosh Computers

From this point on, you'll need to be physically connected to the network port in the Residence Towers. Be sure you have your assigned MonsterID and password. Minimum requirement is Macintosh OS X version 10.3 or above.

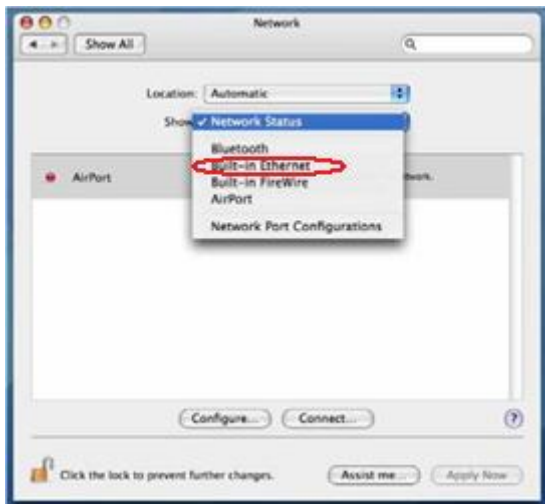
1. In the Apple menu, choose System Preferences.



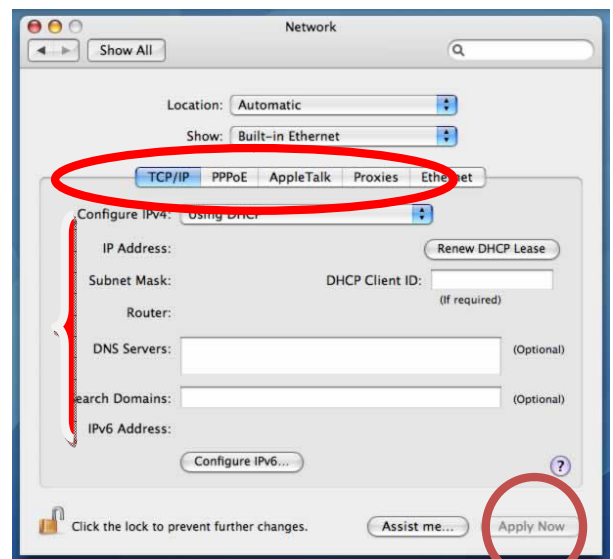
2. Under Internet and Network select Network.



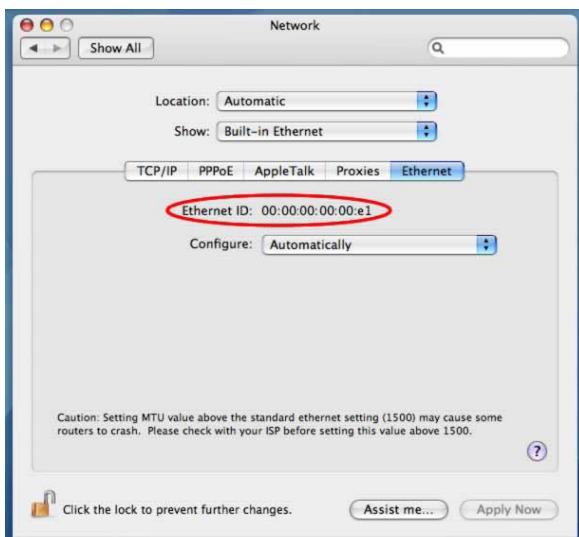
3. Select "Built-In Ethernet" from the "Show" menu.



4. On the TCP/IP tab, if there are numbers that have been manually entered in the IP address, subnet mask, router, or DNS servers fields, delete those numbers. In the "Configure IPv4" field, choose "Using DHCP" and click "Apply Now."



5. You can find the Ethernet Address/MAC address under the Ethernet tab. This is a good opportunity to verify that you recorded this number accurately in Gila Hank Online.

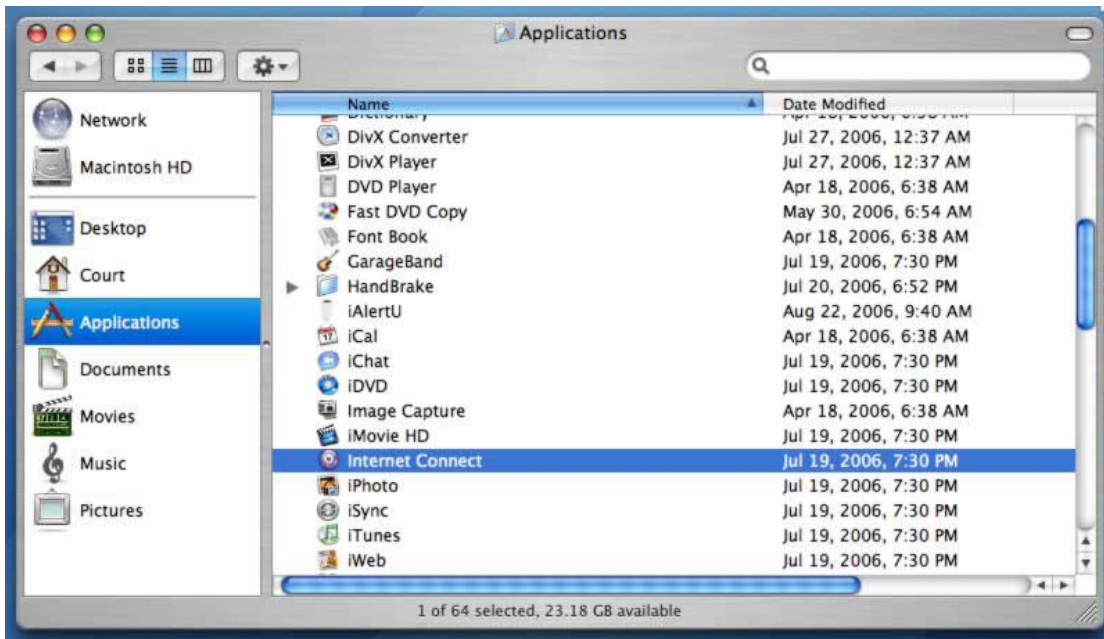


6. Close the Network system preference pane and quit from within the System Preferences application.

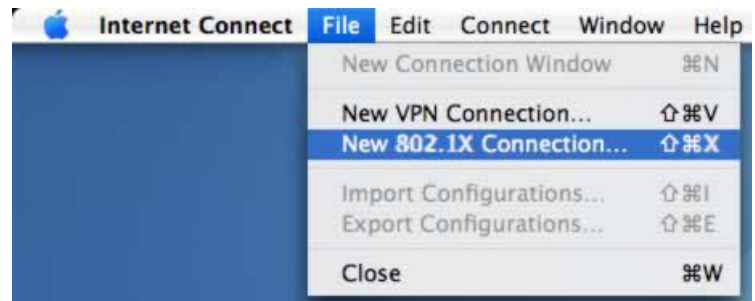
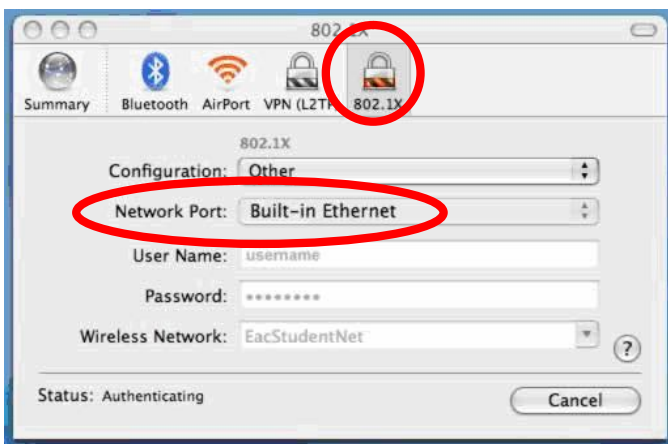
7. . Double click on the hard drive icon on the desktop



8. Select Applications, then Internet Connect.



In the next window, if the 802.1X option does not appear, click "File" then "New 802.1X Connection..." With the 802.1X icon selected, make sure "Built-In Ethernet" is selected for Network Port:



9. Type in the MonsterID and Password, then Click **Connect**. Within 30 seconds you should be connected.